

## Data Sheet - Merlin Major 21

### Merlin Major 21 / Invisible turntable

The Merlin Major 21 car revolve is virtually invisible in operation, allowing vehicles to be rotated as if by magic. Used across the world by major car manufacturers in car showrooms, exhibitions and for product launches, the Merlin Major 21 combines eye-catching movement with ease of installation.

Designed to rotate the majority of contemporary vehicles, the revolve is ideal for turning both smaller family sized saloons and larger prestige marques up to 2,500kg in weight. This flexibility ensures that a full vehicle stock can be rotated, enabling attractive yet cost-effective displays to be created.

Totally portable and requiring no floor fixing, the robust, compact, versatile and extremely smooth running Merlin Major 21 can even be used outdoors, operating from the car's own 12 volt battery, opening it up for forecourt use, launch events, special vehicle brand displays or promotions at the local shopping mall.

Like the Olympian 4.5 and revolving stages, the Merlin features 5 amp slip rings to provide an electrical connection to the rotating element, thereby enabling further lighting and other special effects.

### Specifications

> Capacity:	2500kg vehicle
> Maximum wheelbase:	3353mm
> Minimum wheelbase:	1930mm
> Maximum track:	1575mm
> Minimum track:	1194mm
> Base diameter:	1000mm
> Power consumption (without slip rings):	30W
> Fuse rating:	5A
> Shipping weight:	314kg
> Shipping pack size (LxWxH):	2280x1170x400mm
> Power requirements:	220/240v, AC 50/60 Hz. Ph. 1
> Power alternative:	110v, AC 50/60 Hz. Ph. 1
> Power option:	12v, DC (battery)
> Mains lead:	6m, 3-core flex
> Slip ring capacity:	5A 220/240v AC Ph. 1
> Finish:	Blue hammer finish
> Speed:	Nominal 0.6 revolutions per minute



Safety is paramount, which is why the turntable has been designed to stop upon the slightest obstruction.



## Olympian

Movetech UK also offers the Olympian Turntable, a 4.5m diameter, 2 tonne capacity full platform revolve designed with the car showroom in mind. For more information see the Olympian Data Sheet or ring Movetech UK on 01204 537 680.



## Revolving Stages

Movetech UK also offers a large range of revolving stages, providing full platform revolves from 1m to 10m in diameter, 300mm high; these can be flush-fitted into a showroom floor or mounted in a plinth on top of an existing floor. For more information see the Revolving Stage Data Sheet or ring Movetech UK on 01204 537 680.



## Motorcycle Turntables

Movetech UK offers a wide range of turntables suitable for rotating motorcycles. The range includes both floor-standing and flush-fitted, to carry just one motorcycle or a range of motorcycles for larger displays. For more information see the Motorcycle Turntable Data Sheet or ring Movetech UK on 01204 537 680.



## Rental Solutions

Movetech UK offers a reliable, cost effective worldwide rental service for many of its movement solutions. This is particularly suitable where there is a short term requirement. Our rental units range from simple lightweight product display carousels through to revolving stages for major music and promotional events; this comprehensive rental stock includes a large range of automotive revolves.

If the diameters and capacities of our rental units don't quite meet your requirements, or you would like options such as motion control, a static centre, oscillation, timed or positional hesitation, we can tailor units to suit your needs. We also offer a complete worldwide delivery, installation and removal service. Please call our Rental Hotline to reserve an automotive revolve now on 01204 537 682.



## Data Sheet - Olympian

### Olympian

The Olympian Turntable is a 4.5m diameter 2 tonne capacity full platform revolve designed with the car showroom in mind.

The Olympian has carved a distinctive niche for itself in car showrooms and exhibition halls across the world because it combines elegance with ease of installation. The unit's low profile allows it to be installed on top of an existing showroom floor, and it comes fully finished with an attractive decorative top.

This completely stable full platform revolve provides great value for money, potentially increasing car sales by creating the excitement of a motor show in the display area.



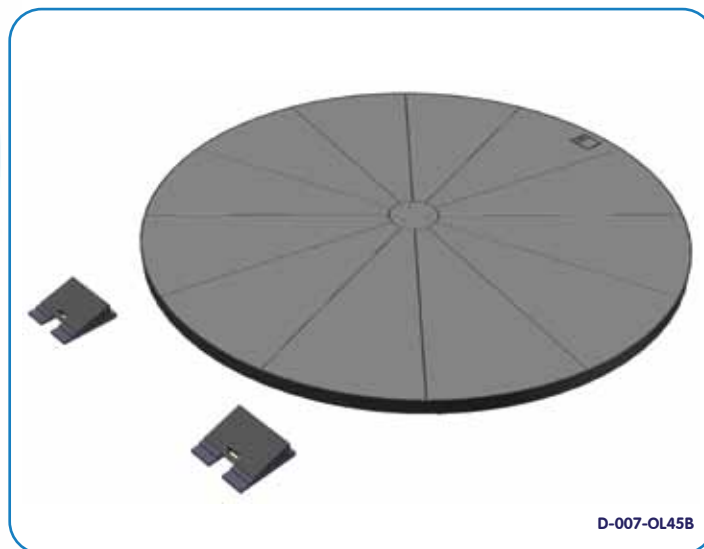


## Olympian Specification

> Capacity:	2000kg
> Diameter:	4.5m
> Top:	Completely finished with grey melamine-faced MDF deck boards
> Level:	Flat plinth design (no raised areas in the top surface)
> Height:	Low profile - only 130mm high
> Skirt:	Black plastic skirt to create an even, clean finish
> Ramps:	Supplied with ramps to load the car
> Remote:	Supplied with hand-held on/off remote
> Power consumption:	200 watts (excluding slip rings)
> Power requirements:	220/240v, AC 50/60 Hz. Ph 1
> Power alternative:	110v, AC 50/60 Hz. Ph. 1
> Slip ring capacity:	5 amp slip rings provide 240v to the rotating surface
> Speed:	Variable speed control
> Direction:	Switchable clockwise and anti-clockwise motion



**Contact Movetech UK now and find out how we can assist you to use movement to attract prospective customers.**





## Alternative Solutions

### Merlin Major

Movetech UK also offers the Merlin Major 21 car turntable, designed to rotate the car 'invisibly' inside or out. For more information see the Merlin Major 21 Data Sheet or ring Movetech UK on 01204 537 680.



### Revolving Stages

Movetech UK also offers a large range of revolving stages providing full platform revolves from 1m to 10m in diameter, 300mm high; these can be flush-fitted into a show room floor or mounted in a plinth on top of an existing floor. For more information see the Revolving Stage Data Sheet or ring Movetech UK on 01204 537 680.



### Motorcycle Turntables

Movetech UK offers a wide range of turntables suitable for rotating motorcycles. The range includes both floor-standing and flush-fitted units, to carry just one motorcycle or a range of motorcycles for larger displays. For more information see the Motorcycle Turntable Data Sheet or ring Movetech UK on 01204 537 680.



### Rental Solutions

Movetech UK offers a reliable, cost effective worldwide rental service for many of its movement solutions. This is particularly suitable where there is a short term requirement. Our rental units range from simple lightweight product display carousels through to revolving stages for major music and promotional events. This comprehensive rental stock includes a large range of automotive revolves up to 10m in diameter.

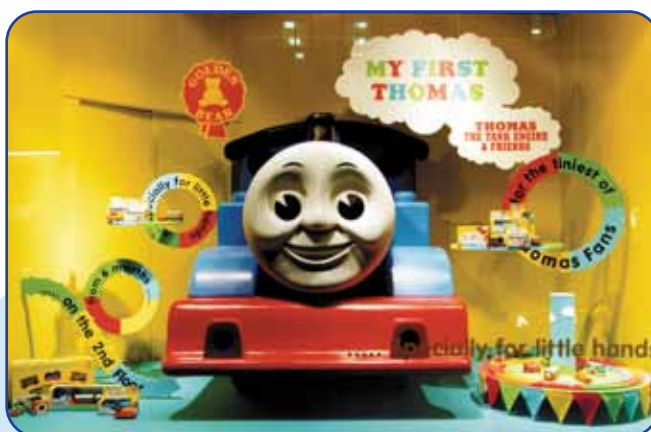


If the diameters and capacities of our rental units don't quite meet your requirements, or you would like options such as motion control, a static centre, oscillation, timed or positional hesitation, we can tailor units to suit your needs. We also offer a complete worldwide delivery, installation and removal service. Please call our Rental Hotline to reserve an automotive revolve now on 01204 537 682.



## Can't find what you are looking for?

Movetech UK's range extends to smaller battery and solar powered movement as well as much larger units. The product portfolio includes off-the-shelf revolving stages up to 33m in diameter, and Movetech UK also offers a bespoke design and build service to cater for all customers needs.



In addition, an economical rental service is available. To discuss your requirements or for further information please contact Movetech UK - 01204 525626 - [info@movetechuk.com](mailto:info@movetechuk.com) - [www.movetechuk.com](http://www.movetechuk.com)



## Data Sheet - Revolving Stages

### Revolving Stages

A Movetech UK revolving stage is built to a unique design that provides a stable, high capacity rotating platform. In the retail and exhibition industries movement adds a dynamic dimension to product displays, and for the events, film and TV industries a Movetech UK revolving stage can create spectacular film sequences and impressive product launches or reveals by moving the audience or the merchandise as required.



Examples of where Movetech UK revolving stages have been used are: car showrooms; concert venues; conference presentations; exhibition halls; fashion shows; film sets; theatre productions; TV shows; and museum and heritage visitor centres.

Movetech UK has been designing and manufacturing revolving stages for more than 50 years and prides itself on customer service and product quality. Many of our products outlive their design life, and numerous units are still working after tens of years in service.

**Contact Movetech UK now and find out how we can assist you to use movement to attract prospective customers.**



D-008-060



D-008-050



D-008-050



D-008-050



## Revolving Stage Specifications

Product Code	Product Description	Power Consumption (Power consumption in watts, excluding slip rings)	Maximum Display Properties		
			Diameter (m)	Height (m)	Weight (kg)
D-008-020	Revolving Stage - 2m diameter	750	2	2	1,000
D-008-025	Revolving Stage - 2.5m diameter	750	2.5	2	1,000
D-008-030	Revolving Stage - 3m diameter	750	3	2	2,000
D-008-040	Revolving Stage - 4m diameter	750	4	4	2,000
D-008-045	Revolving Stage - 4.5m diameter	750	4.5	4	2,000
D-008-050	Revolving Stage - 5m diameter	750	5	4	2,000
D-008-060	Revolving Stage - 6m diameter	1500	6	5	3,000
D-008-070	Revolving Stage - 7m diameter	1500	7	5	3,000
D-008-080	Revolving Stage - 8m diameter	3000	8	5	5,000
D-008-100	Revolving Stage - 10m diameter	3000	10	5	8,000

For information on revolving stages ranging from 10m to 33m in diameter, please contact Movetech UK and we will be happy to advise you on your needs.

## Standard Solutions

Revolving stages come as standard with the following features:

- > 10 amp slip rings providing power to the rotating surface
- > User switchable between clockwise and counter clockwise rotation
- > Variable speed between approximately 0.2rpm and 1.2rpm (speed range dependent on size)
- > 240v mains powered
- > 300mm high
- > Supplied with 25mm Class 1 flame retardant plywood which allows the customer to finish the revolving stage to match the surrounding decor of their own unique application.



## Tailored Solutions

Many customers wish their revolving stage to be tailored to their specific application. Given our long experience and expertise in the design and manufacture of turntables and revolving stages we are perfectly placed to offer a bespoke tailored solution to your requirements.

## Rental Solutions

Movetech UK offers a reliable, cost effective worldwide rental service for many of its movement solutions. This is particularly suitable where there is a short term requirement. Our rental units range from simple lightweight product display carousels through to revolving stages for major music and other events; this comprehensive rental stock includes a large range of revolving stages.

If the diameters and capacities of our rental units don't quite meet your requirements, or you would like options such as motion control, a static centre, oscillation, timed or positional hesitation, we can tailor units to suit your needs. We also offer a complete worldwide delivery, installation and removal service. Please call our Rental Hotline to reserve a stage now on 01204 537 682.

## Can't find what you are looking for?

Movetech UK's range extends to smaller battery and solar powered movement as well as much larger units. The product portfolio includes off-the-shelf revolving stages up to 33m diameter, and Movetech UK also offers a bespoke design and build service to cater for all customers needs.

